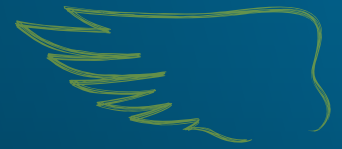




DK IMPRESSION CL

Registration Year 2013, Poland

A COMBINATION OF CLEARFIELD HERBICIDE TOLERANCE AND DEKALB'S POD SHATTER RESISTANCE



VIGOROUS ESTABLISHMENT



POD SHATTER RESISTANCE

PRODUCT CHARACTERISTICS

OIL CONTENT	44.8
EARLINESS AT REGROWTH	LATE
EARLINESS AT FLOWERING	1 2 3 4 5 6 7 8 9
EARLINESS AT MATURITY	1 2 3 4 5 6 7 8 9
PLANT HEIGHT	1 2 3 4 5 6 7 8 9
LODGING RESISTANCE	1 2 3 4 5 6 7 8 9
STEM STIFFNESS	1 2 3 4 5 6 7 8 9
POD SHATTERING RESISTANCE	YES
PHOMA RESISTANCE	1 2 3 4 5 6 7 8 9
LIGHT LEAF SPOT RESISTANCE	1 2 3 4 5 6 7 8 9

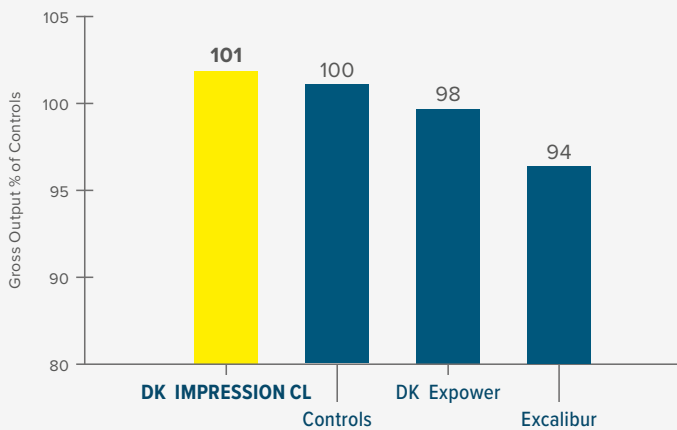
AHDB Recommended List 2018/19 Table 13 available from <https://cereals.ahdb.org.uk/varieties/ahdb-recommended-lists.aspx>

VARIETY BENEFITS

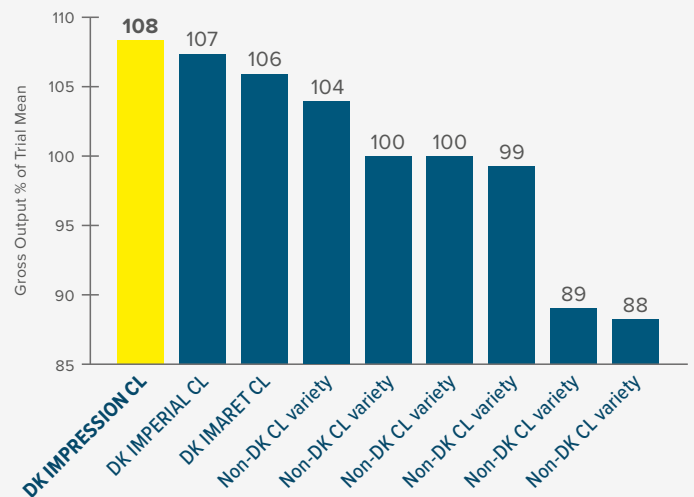
- 1 Specifically bred to combine Clearfield technology and DEKALB's yield protecting traits.
- 2 Medium Autumn growth habit – suitable for early drilling to end of August
- 3 Pod Shatter Resistance

GROSS OUTPUT

NIABTAG CLEARFIELD VARIETY TRIAL 2016 AND 2017



DEKALB REPLICATED TRIALS HARVESTS 2016 & 2017 GROSS OUTPUT



Seed yield from 5 sites replicated, oil content from 3 sites replicated. Controls were DK CABERNET, PR46W21, PT211 and Vision.

Source: NIABTAG 2016 Clearfield Trials: WOR16-606 - Grand Mean 3.52 t/ha, LSD 0.245 t/ha.

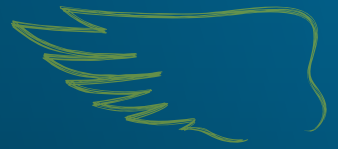
Contact us at uk.dekalb@monsanto.com or learn more at dekalb.co.uk



DK IMPRESSION CL

Registration Year 2013, Hungary

A COMBINATION OF CLEARFIELD HERBICIDE TOLERANCE AND DEKALB'S POD SHATTER RESISTANCE



KEY TRAITS



VIGOROUS ESTABLISHMENT

The combination of the RLM7 gene and Polygenic resistance provides outstanding, durable resistance to Phoma Stem Canker and flexibility in fungicide application.



POD SHATTER RESISTANCE

Genetic resistance that minimises yield loss and volunteer issues caused by seed-shedding up to and during harvest.



RAPID AUTUMN DEVELOPMENT

Rapid Autumn growth habit means that as well as being suitable for the main drilling window it can be the ideal variety for delayed drilling or less than ideal conditions.

The free DEKALB Clearfield Quality Check Scheme brings together rigorous breeding quality standards, effective volunteer and cruciferous weed control capabilities and advanced pre-movement analytic services.

Sign up at:

www.dekalb.co.uk/dekalb-clearfield-grower

TESTIMONIAL

“DK IMPRESSION CL has the Clearfield™ herbicide resistance trait. It is also capable of high yields with high oil content. It features pod shatter resistance and good resistance to phoma and light leaf spot. Particularly suited for early drilling and the main drilling window.”



MATTHEW CLARKE

RECOMMENDATIONS

Seed rate should target an even plant stand of 25-30 plants/m² in spring.

Phoma and light leaf spot should be monitored and treated as required.

Ensure the Green Area Index is accurately determined at the start of spring growth to guide appropriate nitrogen rates for optimal canopy size. Lodging risk with DK IMPRESSION CL is moderate and there may be a benefit from PGR use to optimise the canopy structure.

Contact our National Account Managers, tom.chillcott@monsanto.com, 07976 397300, lizzie.matthews@monsanto.com, 07918 622318 or our Technical Development and Agronomy representative, william.vaughan-france@monsanto.com, 07768 507866

or learn more at **dekalb.co.uk**

DEKALB® is a registered trademark of Monsanto Technology LLC.