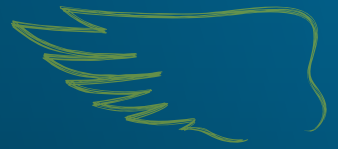




DK IMPERIAL CL

Registration Year 2013, Hungary
THE BENCHMARK CLEARFIELD VARIETY



VIGOROUS ESTABLISHMENT



DOUBLE PHOMA RESISTANCE



POD SHATTER RESISTANCE

PRODUCT CHARACTERISTICS

OIL CONTENT	45.9
EARLINESS AT REGROWTH	MID-LATE
EARLINESS AT FLOWERING	1 2 3 4 5 6 7 8 9
EARLINESS AT MATURITY	1 2 3 4 5 6 7 8 9
PLANT HEIGHT	1 2 3 4 5 6 7 8 9
LODGING RESISTANCE	1 2 3 4 5 6 7 8 9
STEM STIFFNESS	1 2 3 4 5 6 7 8 9
POD SHATTERING RESISTANCE	YES
PHOMA RESISTANCE	1 2 3 4 5 6 7 8 9
LIGHT LEAF SPOT RESISTANCE	1 2 3 4 5 6 7 8 9

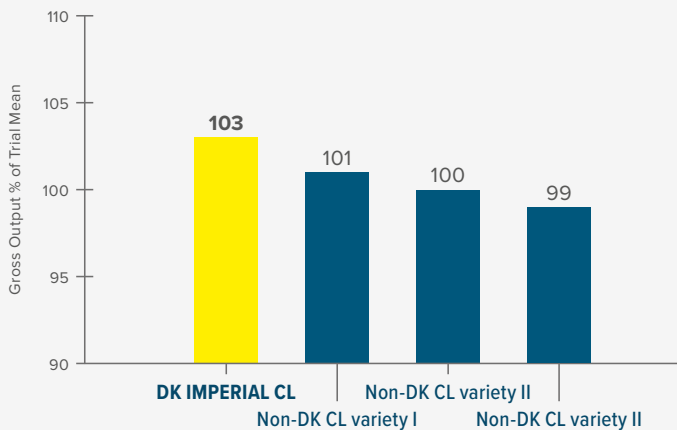
AHDB Recommended List 2018/19 Table 13 available from <https://cereals.ahdb.org.uk/varieties/ahdb-recommended-lists.aspx>

VARIETY BENEFITS

- 1 Yields in line with leading UK OSR variety DK EXTROVERT.
- 2 Specifically bred to combine Clearfield technology and DEKALB's yield protecting traits.
- 3 Pod Shatter Resistance

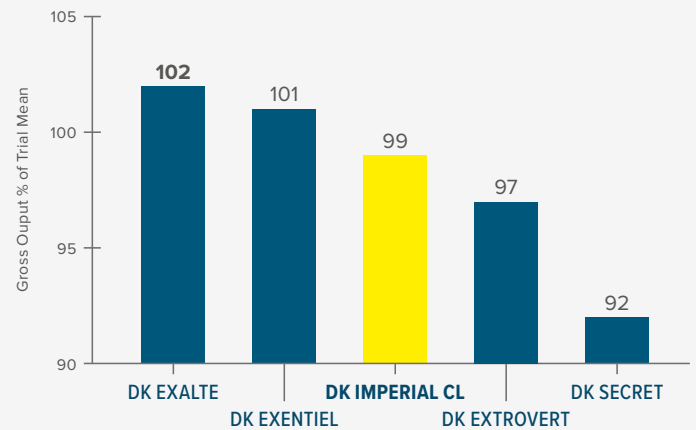
GROSS OUTPUT

NIABTAG CLEARFIELD VARIETY TRIAL 2016 AND 2017



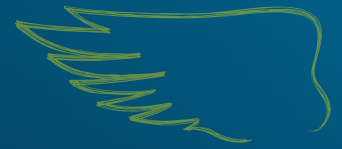
Source: NIABTAG Clearfield Network trials 2016 and 2017, Gross Output as % of Trial mean. Only 4 varieties entered in both seasons.

DEKALB REPLICATED TRIALS HARVESTS 2016 & 2017 GROSS OUTPUT



Source: Extract from DEKALB replicated MidiFACT Trials Harvest 2016 3 sites and Harvest 2017 5 sites. % of Trial Mean of all varieties included in both years.

Contact us at uk.dekalb@monsanto.com or learn more at dekalb.co.uk



KEY TRAITS



DOUBLE PHOMA RESISTANCE

Proven ability to establish robust, well-rooted plants that are best able to cope with challenging UK conditions.



VIGOROUS ESTABLISHMENT

The combination of the RLM7 gene and Polygenic resistance provides outstanding, durable resistance to Phoma Stem Canker and flexibility in fungicide application.



POD SHATTER RESISTANCE

Genetic resistance that minimises yield loss and volunteer issues caused by seed-shedding up to and during harvest.



RAPID AUTUMN DEVELOPMENT

Rapid Autumn growth habit means that as well as being suitable for the main drilling window it can be the ideal variety for delayed drilling or less than ideal conditions.

The free DEKALB Clearfield Quality Check Scheme brings together rigorous breeding quality standards, effective volunteer and cruciferous weed control capabilities and advanced pre-movement analytic services.

Sign up at:

www.dekalb.co.uk/dekalb-clearfield-grower

TESTIMONIAL

"I've gone 100% DK IMPERIAL CL to get the toughest grasses and broadleaf weeds out off mind and because the Clearfield Technology combined with DEKALB's yield protecting traits enables me to get the most out of every acre"



KEITH CHALLEN

RECOMMENDATIONS

Seed rate should target an even plant stand of 25-30 plants/m² in spring.

The rapid autumn growth habit means a PGR may be appropriate in early/mid October on crops early sown or on fertile sites to reduce the risk of over development pre winter.

Ensure the Green Area Index is accurately determined at the start of spring growth to guide appropriate nitrogen rates for optimal canopy size. Lodging risk with DK IMPERIAL CL is moderate.

Contact our National Account Managers, tom.chillcott@monsanto.com, 07976 397300, lizzie.matthews@monsanto.com, 07918 622318 or our Technical Development and Agronomy representative, william.vaughan-france@monsanto.com, 07768 507866

or learn more at dekalb.co.uk

DEKALB® is a registered trademark of Monsanto Technology LLC.