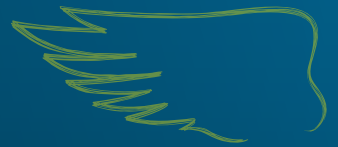




DK IMPRESSARIO CL

Registration Year 2015, Hungary

A ROBUST COMBINATION OF CLEARFIELD HERBICIDE TOLERANCE AND DEKALB'S YIELD PROTECTING TRAITS



VIGOROUS ESTABLISHMENT



DOUBLE PHOMA RESISTANCE



POD SHATTER RESISTANCE

PRODUCT CHARACTERISTICS

EARLINESS AT REGROWTH	MID
EARLINESS AT FLOWERING	1 2 3 4 5 6 7 8 9
EARLINESS AT MATURITY	1 2 3 4 5 6 7 8 9
PLANT HEIGHT	1 2 3 4 5 6 7 8 9
LODGING RESISTANCE	1 2 3 4 5 6 7 8 9
STEM STIFFNESS	1 2 3 4 5 6 7 8 9
POD SHATTERING RESISTANCE	YES
PHOMA RESISTANCE	1 2 3 4 5 6 7 8 9
LIGHT LEAF SPOT RESISTANCE	1 2 3 4 5 6 7 8 9

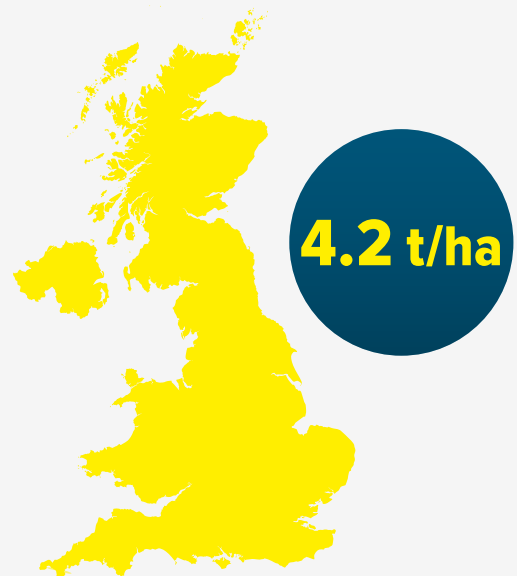
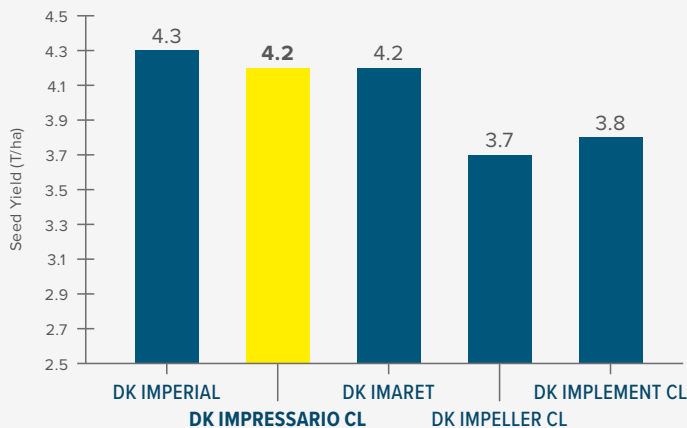
AHDB Recommended List 2018/19 Table 13 available from <https://cereals.ahdb.org.uk/varieties/ahdb-recommended-lists.aspx>

VARIETY BENEFITS

- 1** Rapid-Autumn development growth habit - suitable for drilling up to mid September.
- 2** Specifically bred to combine Clearfield technology and DEKALB's yield protecting traits.
- 3** Pod Shatter Resistance

GROSS OUTPUT

UK UNTREATED TRIALS HARVEST 2017



Source: Extract from Monsanto UK Untreated Oilseed Rape Breeding trials 2017

Source: Extract from Monsanto UK Untreated Oilseed Rape Breeding trials 2017

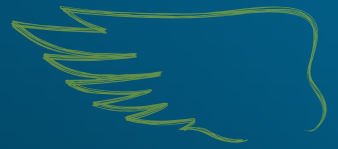
Contact us at uk.dekalb@monsanto.com or learn more at dekalb.co.uk



DK IMPRESSARIO CL

Registration Year 2015, Hungary

A ROBUST COMBINATION OF CLEARFIELD HERBICIDE TOLERANCE AND DEKALB'S YIELD PROTECTING TRAITS



KEY TRAITS



VIGOROUS ESTABLISHMENT

Proven ability to establish robust, well-rooted plants that are best able to cope with challenging UK conditions.



DOUBLE PHOMA RESISTANCE

The combination of the RLM7 gene and Polygenic resistance provides outstanding, durable resistance to Phoma Stem Canker and flexibility in fungicide application.



POD SHATTER RESISTANCE

Genetic resistance that minimises yield loss and volunteer issues caused by seed-shedding up to and during harvest.



RAPID AUTUMN DEVELOPMENT

Rapid Autumn growth habit means that as well as being suitable for the main drilling window it can be the ideal variety for delayed drilling or less than ideal conditions.

The free DEKALB Clearfield Quality Check Scheme brings together rigorous breeding quality standards, effective volunteer and cruciferous weed control capabilities and advanced pre-movement analytic services.

Sign up at:

www.dekalb.co.uk/dekalb-clearfield-grower

BREEDER'S VIEW

"DK IMPRESSARIO CL is a restored hybrid with the Clearfield™ herbicide resistance trait. It is also capable of high yields with high oil content. It features pod shatter resistance, double phoma resistance and good tolerance to light leaf spot. Has performed extremely well in our own breeding trials."



MATTHEW CLARKE

RECOMMENDATIONS

Seed rate should target an even plant stand of 25-30 plants/m² in spring.

The rapid autumn growth habit means a PGR may be appropriate in early/mid October on crops early sown or on fertile sites to reduce the risk of over development pre winter.

Ensure the Green Area Index is accurately determined at the start of spring growth to guide appropriate nitrogen rates for optimal canopy size. Lodging risk with DK IMPRESSARIO CL is moderate

Contact our National Account Managers, tom.chillcott@monsanto.com, 07976 397300, lizzie.matthews@monsanto.com, 07918 622318 or our Technical Development and Agronomy representative, william.vaughan-france@monsanto.com, 07768 507866

or learn more at **dekalb.co.uk**

DEKALB® is a registered trademark of Monsanto Technology LLC.