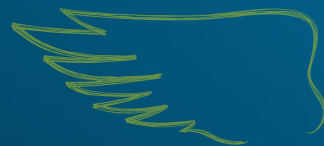




DK EXPEDIENT

Registration Year 2016, UK

NEW FROM DEKALB, RAPID DEVELOPING, EARLY TO HARVEST,
HIGH YIELDING VARIETY



VIGOROUS ESTABLISHMENT



DOUBLE PHOMA RESISTANCE



POD SHATTER RESISTANCE

PRODUCT CHARACTERISTICS

GROSS OUTPUT	103
OIL CONTENT	45.3
EARLINESS AT REGROWTH	EARLY
EARLINESS AT FLOWERING	1 2 3 4 5 6 7 8 9
EARLINESS AT MATURITY	1 2 3 4 5 6 7 8 9
PLANT HEIGHT	1 2 3 4 5 6 7 8 9
LODGING RESISTANCE	1 2 3 4 5 6 7 8 9
STEM STIFFNESS	1 2 3 4 5 6 7 8 9
POD SHATTERING RESISTANCE	YES
PHOMA RESISTANCE	1 2 3 4 5 6 7 8 9
LIGHT LEAF SPOT RESISTANCE	1 2 3 4 5 6 7 8 9

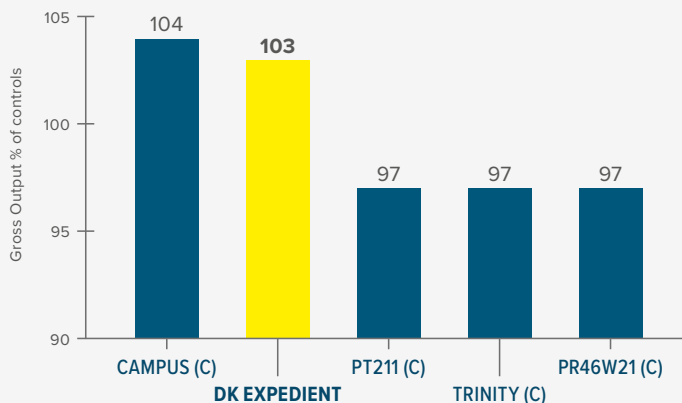
AHDB Recommended List 2018/19 Table 13 available from <https://cereals.ahdb.org.uk/varieties/ahdb-recommended-lists.aspx>

VARIETY BENEFITS

- 1 Rapid Autumn growth habit – suitable for drilling up to mid September
- 2 Double phoma resistance
- 3 Early maturity

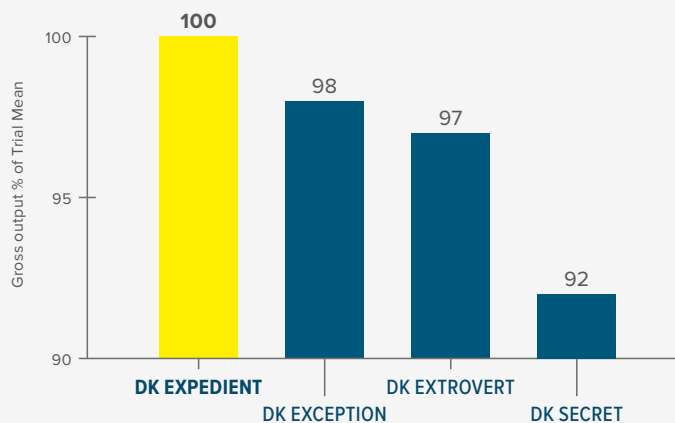
GROSS OUTPUT

AHDB RL 2018/19 - GROSS OUTPUT



Source: AHDB Recommended Lists 2018/19 Table 16 - Varieties not added to the RL. Data available from <https://ahdb.cereals.org.uk>

DEKALB REPLICATED TRIALS HARVEST 2016 & 2017



Source: Extract from DEKALB replicated MidiFACT Trials Harvest 2016 & 2017, Gross Output as a % of trial mean for varieties included in both years

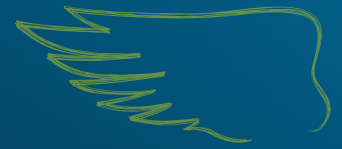
Contact us at uk.dekalb@monsanto.com or learn more at dekalb.co.uk



DK EXPEDIENT

Registration Year 2016, UK

NEW FROM DEKALB, RAPID DEVELOPING, EARLY TO HARVEST,
HIGH YIELDING VARIETY



KEY TRAITS



VIGOROUS ESTABLISHMENT

Proven ability to establish robust, well-rooted plants that are best able to cope with challenging UK conditions.



DOUBLE PHOMA RESISTANCE

The combination of the RLM7 gene and polygenic resistance provides outstanding, durable resistance to phoma stem canker and flexibility in fungicide application.



POD SHATTER RESISTANCE

Genetic resistance that minimizes yield loss and volunteer issues caused by seed shedding up to, and during, harvest.



RAPID AUTUMN DEVELOPMENT

Rapid Autumn growth habit means that as well as being suitable for the main drilling window it can be the ideal variety for delayed drilling or less than ideal conditions.



EARLY MATURITY

Early maturing to spread harvest dates and enable growers to clear land earlier.

BREEDER'S VIEW

“DK EXPEDIENT is a restored hybrid selected as a Recommended List candidate for the East West region. It is capable of very high yields with very high oil content. It features pod shatter resistance, double phoma resistance, relatively short plant height and very rapid autumn and spring development along with extremely early maturity.”



MATTHEW CLARKE

RECOMMENDATIONS

Seed rate should target an even plant stand of 25-30 plants/m² in spring.

The rapid autumn growth habit means a PGR may be appropriate in early/mid October on crops early sown or on fertile sites to reduce the risk of over development pre winter.

The early and rapid spring growth habit means PGRs should be considered on forward crops and fertile sites or those with a history of lodging along with appropriate nitrogen rates to avoid oversize canopies. Ensure the Green Area Index is accurately determined at the start of spring growth.

Contact our National Account Managers, tom.chillcott@monsanto.com, 07976 397300, lizzie.matthews@monsanto.com, 07918 622318 or our Technical Development and Agronomy representative, william.vaughan-france@monsanto.com, 07768 507866

or learn more at dekalb.co.uk

DEKALB® is a registered trademark of Monsanto Technology LLC.