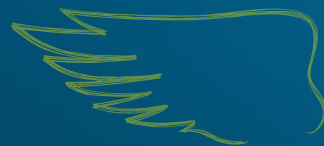




# DK EXPANSION

Registration Year 2015, France

**NEW FROM DEKALB, HIGH YIELDING HIGH OIL CONTENT VARIETY**



**VIGOROUS ESTABLISHMENT**



**DOUBLE PHOMA RESISTANCE**



**POD SHATTER RESISTANCE**

## PRODUCT CHARACTERISTICS

GROSS OUTPUT	105
OIL CONTENT	45.6
EARLINESS AT REGROWTH	MID
EARLINESS AT FLOWERING	1 2 3 4 <b>5</b> 6 7 8 9
EARLINESS AT MATURITY	1 2 3 4 5 <b>6</b> 7 8 9
PLANT HEIGHT	167 cm
LODGING RESISTANCE	1 2 3 4 5 6 7 <b>8</b> 9
STEM STIFFNESS	1 2 3 4 5 6 7 8 9
POD SHATTERING RESISTANCE	YES
PHOMA RESISTANCE	1 2 3 4 5 6 7 8 9
LIGHT LEAF SPOT RESISTANCE	1 2 3 4 <b>5</b> 6 7 8 9

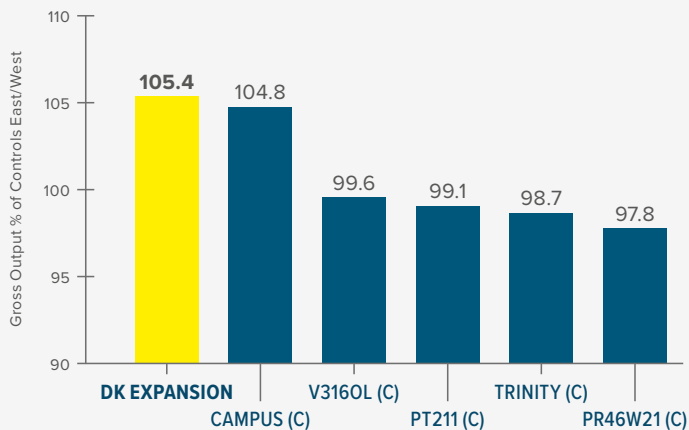
AHDB Recommended List 2018/19 Table 13 available from <https://cereals.ahdb.org.uk/varieties/ahdb-recommended-lists.aspx>

## VARIETY BENEFITS

- 1 Medium - Rapid Autumn growth habit - suitable for early drilling to early September
- 2 Double phoma resistance
- 3 Stiff Stemmed at harvest

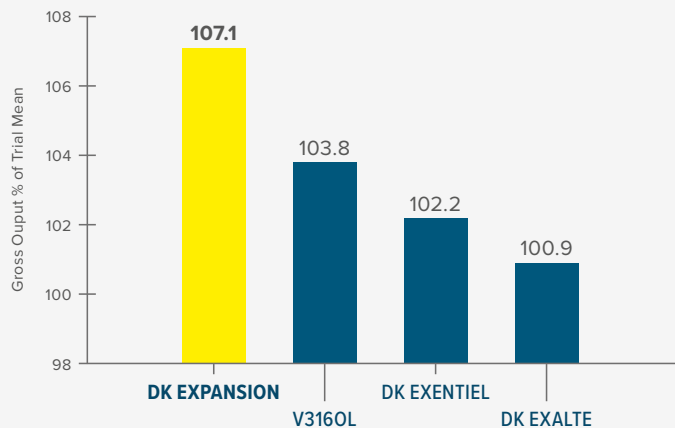
## GROSS OUTPUT

### AHDB RECOMMENDED LIST 2018/19 - CANDIDATE VARIETIES GROSS OUTPUT



Source: AHDB Recommended List 2018/2019 - Table 15 - Candidate Varieties, (C) denotes Control Variety

### DEKALB REPLICATED TRIALS HAVEST 2017 - GROSS OUTPUT



Source: DEKALB Replicated MIDIFACT Trials Harvest 2017, 5 sites, Gross output as a % of trial mean

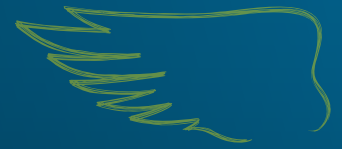
Contact us at [uk.dekalb@monsanto.com](mailto:uk.dekalb@monsanto.com) or learn more at [dekalb.co.uk](http://dekalb.co.uk)



# DK EXPANSION

Registration Year 2015, France

NEW FROM DEKALB, HIGH YIELDING HIGH OIL  
CONTENT VARIETY



## KEY TRAITS



### VIGOROUS ESTABLISHMENT

Proven ability to establish robust, well-rooted plants that are best able to cope with challenging UK conditions.



### DOUBLE PHOMA RESISTANCE

The combination of the RLM7 gene and polygenic resistance provides outstanding, durable resistance to phoma stem canker and flexibility in fungicide application.



### POD SHATTER RESISTANCE

Genetic resistance that minimises yield loss and volunteer issues caused by seed-shedding up to and during harvest.



### HIGH OIL

Consistent high oil content adding value to the harvested crop through higher oil bonus payments.

## RECOMMENDATIONS

Seed rate should target an even plant stand of 25-30 plants/m<sup>2</sup> in spring.

Ensure the Green Area Index is accurately determined at the start of spring growth to guide appropriate nitrogen rates for optimal canopy size. Lodging risk with DK EXPANSION is low.

Light Leaf Spot should be monitored and treated as required.

## BREEDER'S VIEW

*“DK EXPANSION is a restored hybrid capable of very high yields with very high oil content. It was the highest yielding new hybrid entry in 2016 UK official trials. It features pod shatter resistance, double phoma resistance and mid season flowering and maturity.”*



**MATTHEW CLARKE**

Contact our National Account Managers, [tom.chillcott@monsanto.com](mailto:tom.chillcott@monsanto.com), 07976 397300,  
[lizzie.matthews@monsanto.com](mailto:lizzie.matthews@monsanto.com), 07918 622318  
or our Technical Development and Agronomy representative,  
[william.vaughan-france@monsanto.com](mailto:william.vaughan-france@monsanto.com), 07768 507866

or learn more at [dekalb.co.uk](http://dekalb.co.uk)

DEKALB® is a registered trademark of Monsanto Technology LLC.