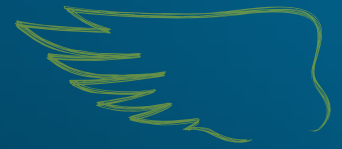




DK EXCEPTION

Registration Year 2015, UK

EUROPEAN BLOCKBUSTER DELIVERING YIELD STABILITY,
YEAR AFTER YEAR



**VIGOROUS
ESTABLISHMENT**



**DOUBLE PHOMA
RESISTANCE**



**POD SHATTER
RESISTANCE**

PRODUCT CHARACTERISTICS

GROSS OUTPUT	105
OIL CONTENT	44.8
EARLINESS AT REGROWTH	MID
EARLINESS AT FLOWERING	1 2 3 4 5 6 7 8 9
EARLINESS AT MATURITY	1 2 3 4 5 6 7 8 9
PLANT HEIGHT	1 2 3 4 5 6 7 8 9
LODGING RESISTANCE	1 2 3 4 5 6 7 8 9
STEM STIFFNESS	1 2 3 4 5 6 7 8 9
POD SHATTERING RESISTANCE	YES
PHOMA RESISTANCE	1 2 3 4 5 6 7 8 9
LIGHT LEAF SPOT RESISTANCE	1 2 3 4 5 6 7 8 9

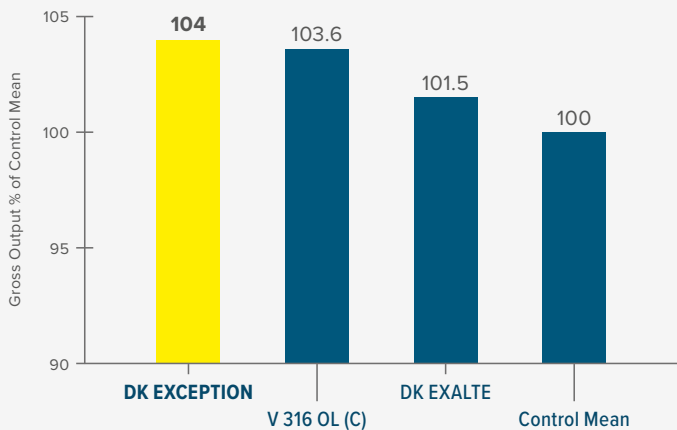
AHDB Recommended List 2018/19 Table 13 available from
<https://cereals.ahdb.org.uk/varieties/ahdb-recommended-lists.aspx>

VARIETY BENEFITS

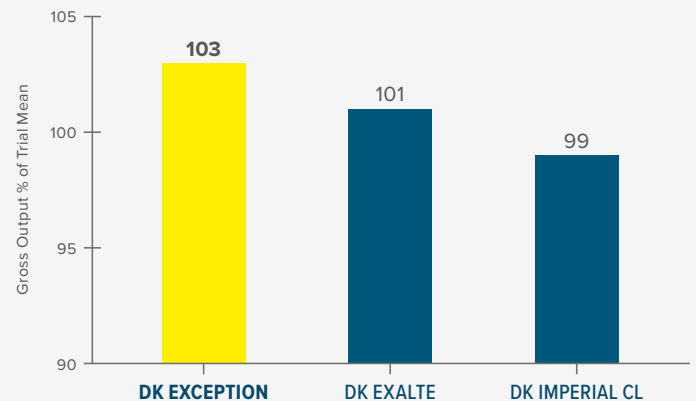
- 1 Medium-rapid Autumn growth habit – suitable for early drilling to early September
- 2 Double Phoma resistance
- 3 Pod Shatter Resistance

GROSS OUTPUT

AHDB RECOMMENDED LIST TRIALS 2017 UNTREATED GROSS OUTPUT



DEKALB REPLICATED TRIALS HARVEST 2017 - GROSS OUTPUT



Source: AHDB Recommended List Harvest 2017 Untreated WOSR Trials, results for recommended varieties available from <https://cereals.ahdb.org.uk> DK EXCEPTION yield results published by Monsanto UK Ltd.

Source: Extract from DEKALB Replicated MIDIFACT Trials Harvest 2017 - 5 sites

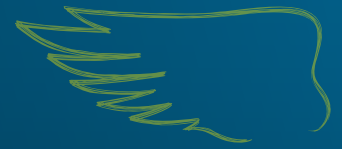
Contact us at uk.dekalb@monsanto.com or learn more at dekalb.co.uk



DK EXCEPTION

Registration Year 2015, UK

EUROPEAN BLOCKBUSTER DELIVERING YIELD STABILITY,
YEAR AFTER YEAR



KEY TRAITS



VIGOROUS ESTABLISHMENT

Proven ability to establish robust, well-rooted plants that are best able to cope with challenging UK conditions.



DOUBLE PHOMA RESISTANCE

The combination of the RLM7 gene and polygenic resistance provides outstanding, durable resistance to phoma stem canker and flexibility in fungicide application.



POD SHATTER RESISTANCE

Genetic resistance that minimises yield loss and volunteer issues caused by seed shedding up to, and during harvest.

RECOMMENDATIONS

Seed rate should target an even plant stand of 25-30 plants/m² in spring.

Light Leaf Spot should be monitored and treated as required.

The medium-rapid autumn growth habit means a PGR may be appropriate in early/mid October on very forward crops to reduce the risk of over development pre winter.

BREEDER'S VIEW

“DK EXCEPTION is a good choice for growers throughout the UK. It has given outstanding gross output over a wide range of UK and European locations. It features pod shatter resistance and very high lodging resistance. Initial work suggests that it has improved Nitrogen Use Efficiency (NUE).”



MATTHEW CLARKE

Contact our National Account Managers, tom.chillcott@monsanto.com, 07976 397300,
lizzie.matthews@monsanto.com, 07918 622318
or our Technical Development and Agronomy representative,
william.vaughan-france@monsanto.com, 07768 507866

or learn more at dekalb.co.uk

DEKALB® is a registered trademark of Monsanto Technology LLC.