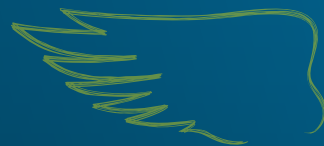




# DK EXALTE

Registration Year 2015, UK

**A LEADING COMBINATION OF FAST EARLY PLANT DEVELOPMENT AND DEKALB'S YIELD PROTECTING TRAITS**



**VIGOROUS ESTABLISHMENT**



**DOUBLE PHOMA RESISTANCE**



**POD SHATTER RESISTANCE**

## PRODUCT CHARACTERISTICS

GROSS OUTPUT	102
OIL CONTENT	45.5
EARLINESS AT REGROWTH	EARLY-MID
EARLINESS AT FLOWERING	1 2 3 4 5 6 7 8 9
EARLINESS AT MATURITY	1 2 3 4 5 6 7 8 9
PLANT HEIGHT	1 2 3 4 5 6 7 8 9
LODGING RESISTANCE	1 2 3 4 5 6 7 8 9
STEM STIFFNESS	1 2 3 4 5 6 7 8 9
POD SHATTERING RESISTANCE	YES
PHOMA RESISTANCE	1 2 3 4 5 6 7 8 9
LIGHT LEAF SPOT RESISTANCE	1 2 3 4 5 6 7 8 9

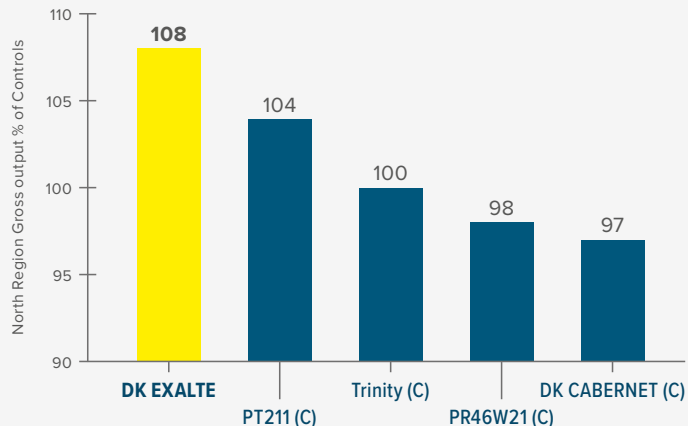
AHDB Recommended List 2018/19 Table 13 available from <https://cereals.ahdb.org.uk/varieties/ahdb-recommended-lists.aspx>

## VARIETY BENEFITS

- 1 Rapid Autumn growth habit - suitable for drilling up to mid September
- 2 Very good combined Stem Canker and Light Leaf Spot Resistance
- 3 Pod Shatter Resistance

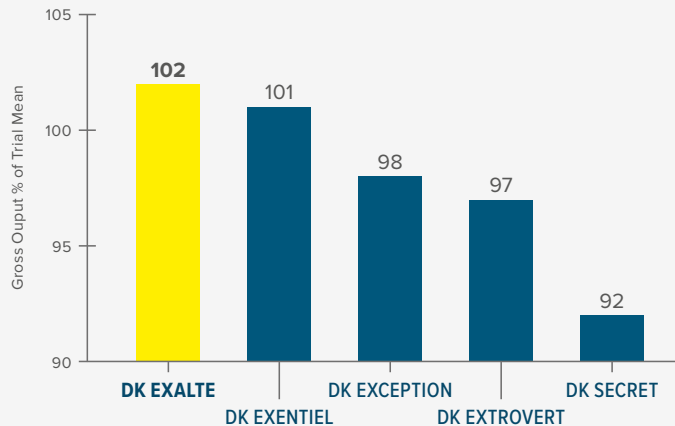
## GROSS OUTPUT

### AHDB RL NORTH TRIALS HARVEST 2016



Source: Extract from AHDB Recommended List 2017/18 Table 16 – full dataset available from <https://cereals.ahdb.org.uk> – note DK EXALTE not added to the recommended list.

### DEKALB REPLICATED TRIALS HARVEST 2016 & 2017 GROSS OUTPUT



Source: Extract from DEKALB replicated MidiFACT Trials Harvest 2016 3 sites and Harvest 2017 5 sites. % of Trial Mean of all varieties included in both years.

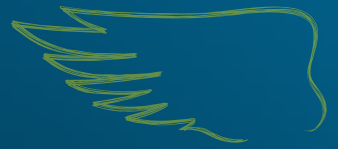
Contact us at [uk.dekalb@monsanto.com](mailto:uk.dekalb@monsanto.com) or learn more at [dekalb.co.uk](http://dekalb.co.uk)



# DK EXALTE

Registration Year 2015, UK

A LEADING COMBINATION OF FAST EARLY PLANT DEVELOPMENT AND DEKALB'S YIELD PROTECTING TRAITS



## KEY TRAITS



### VIGOROUS ESTABLISHMENT

Proven ability to establish robust, well-rooted plants that are best able to cope with challenging UK conditions.



### DOUBLE PHOMA RESISTANCE

The combination of the RLM7 gene and Polygenic resistance provides outstanding, durable resistance to Phoma Stem Canker and flexibility in fungicide application.



### POD SHATTER RESISTANCE

Genetic resistance that minimises yield loss and volunteer issues caused by seed-shedding up to and during harvest.



### RAPID AUTUMN DEVELOPMENT

Rapid Autumn growth habit means that as well as being suitable for the main drilling window it can be the ideal variety for delayed drilling or less than ideal conditions.



### GOOD LIGHT LEAF SPOT RESISTANCE

Solid polygenic resistance providing a good level of protection from Light Leaf Spot the 2<sup>nd</sup> most important OSR disease.



### HIGH OIL

Consistent high oil content adding value to the harvested crop through higher oil bonus payments.

## BREEDER'S VIEW

*"Our 50ha of DK EXALTE did us proud last year, delivering comfortably over 5t/ha for an input cost of less than £110/t. We particularly value its rapid autumn and spring development and robust resistance to phoma, light leaf spot and pod shattering."*



GUY SHELBY

## RECOMMENDATIONS

Seed rate should target an even plant stand of 25-30 plants/m<sup>2</sup> in spring.

The rapid autumn growth habit means a PGR may be appropriate in early/mid October on crops early sown or on fertile sites to reduce the risk of over development pre winter.

The early and rapid spring growth habit means PGRs should be considered on forward crops and fertile sites or those with a history of lodging along with appropriate nitrogen rates to avoid oversize canopies. Ensure the Green Area Index is accurately determined at the start of spring growth.

Contact our National Account Managers, [tom.chillcott@monsanto.com](mailto:tom.chillcott@monsanto.com), 07976 397300, [lizzie.matthews@monsanto.com](mailto:lizzie.matthews@monsanto.com), 07918 622318 or our Technical Development and Agronomy representative, [william.vaughan-france@monsanto.com](mailto:william.vaughan-france@monsanto.com), 07768 507866

or learn more at [dekalb.co.uk](http://dekalb.co.uk)

DEKALB® is a registered trademark of Monsanto Technology LLC.